

Vision RL

Persistent Vision System



10:33:05

International Airport

Vision RL Located on top of a Tower
77 Meters Above Ground
South Orientation

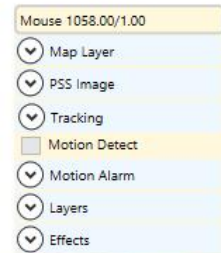
Vision RL Configuration:

Seven 16 Megapixel Cameras
Five 50 mm Lenses - Middle

Two 135 mm Lenses – Far left & Far Right

One 800 mm Spotter Camera

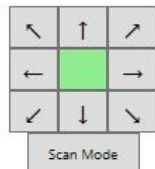
Weather Conditions: Overcast



View Looking South)
Seven Camera Zones



Yellow box within orange box
represents area being viewed



VISION-RL

Persistent Vision System

Base System Anatomy



Spotter Camera - *Option*

- Daylight (EO)
 - Available EO lens lengths from 200 mm to 1600 mm
 - 16 or 29 Megapixel
- NightTime (LWIR) - *Option*
 - Up to 3.1 megapixel
 - Up to 400 mm lens
 - Dedicated or co-bore sighted
- 300 degree operation
- Analyst cueing via iView Image Exploitation Software
- Constant on
- Step Stare when idle - *Option*

Vision RL Base System

- Daylight (EO)
- Constant On
- Seven Cameras
- Available EO lens lengths from 50 mm to 200 mm
- 16 or 29 Megapixel
- Available 190 degree coverage
- 4 km radius, 25sq km coverage area
- ½ meter resolution throughout
- Image Processing Server
- iView Image Exploitation Software

Vision RL Multi-Mount

- Tripod
- Pole
- Building

Vision RL

Persistent Vision System

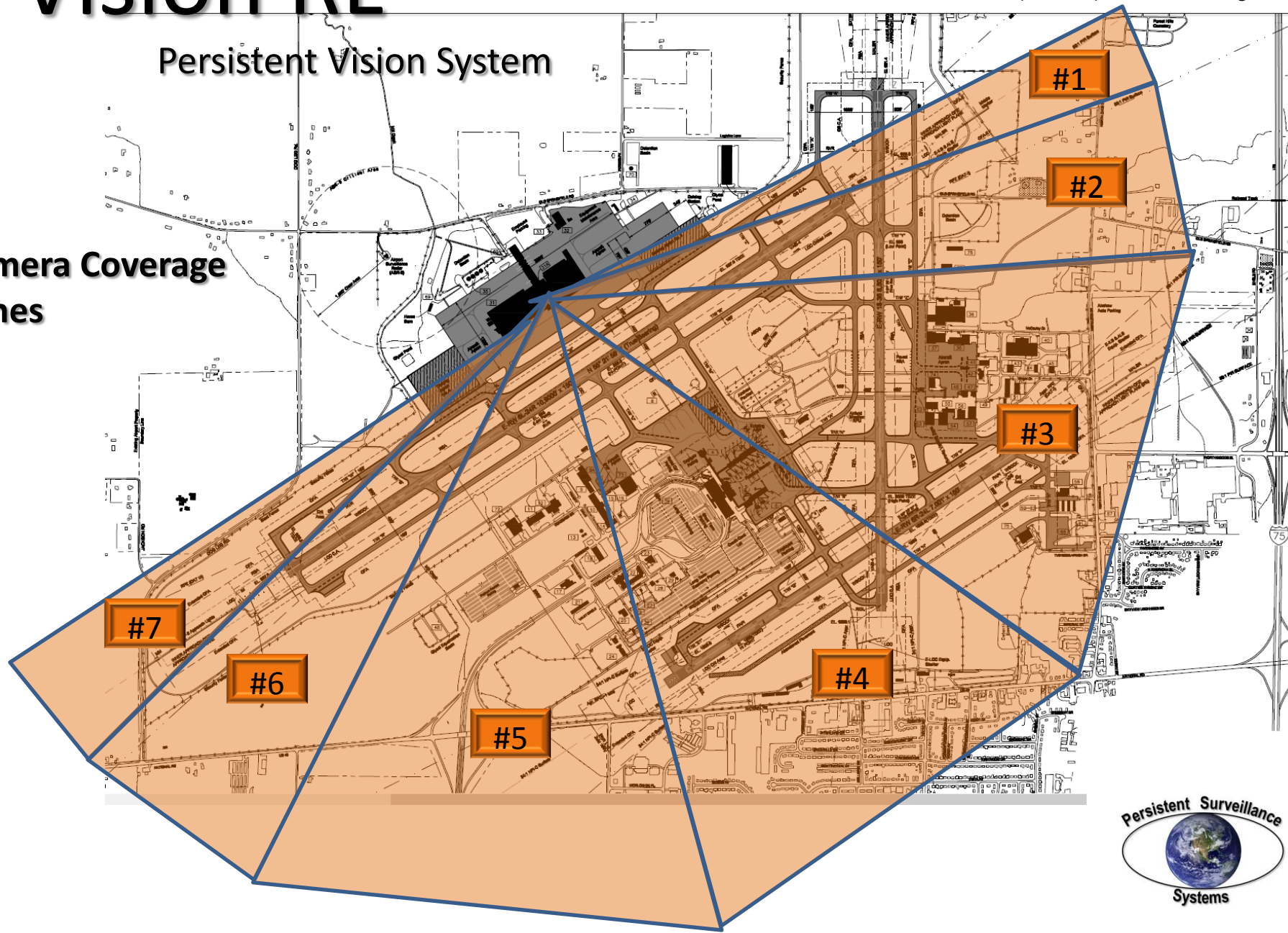
Base System Configuration – EO (Daylight)

2.5 mile (4 km) radius

9.8 sq mile (25 km) coverage area

1.5 foot (.5 meter) resolution throughout

Camera Coverage
Zones



Vision RL

Persistent Vision System



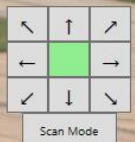
BASE SYSTEM IMAGE



Camera #1
Coverage Area

Camera #1

- 135 mm Lens
- View impeded due to Emory Tower Rail around roof and building surveillance camera.
- Images taken at 18:20 May 24, 2013



Vision RL

Persistent Vision System

SPOTTER CAMERA IMAGE



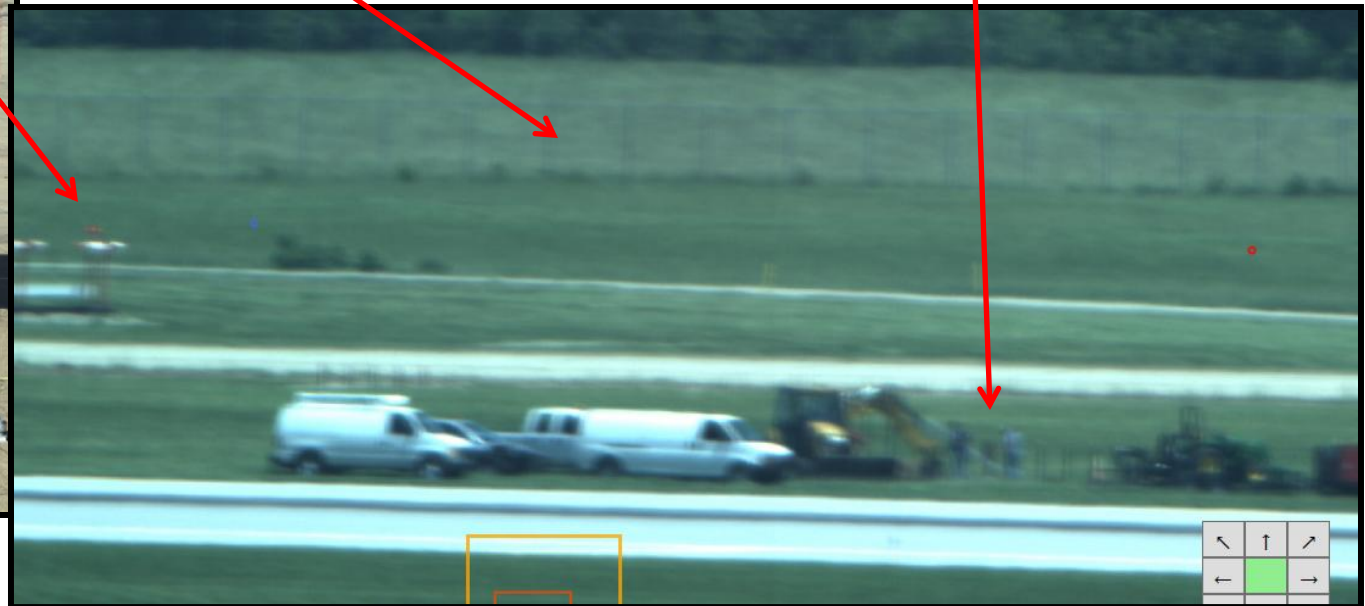
Spotter Camera

- 800 mm Lens
- View impeded due to Tower Rail around roof and building surveillance camera.
- Image taken at 13:52 May 29, 2013

Camera #1
Coverage Area

Perimeter Fence

Four men, one carrying conduit

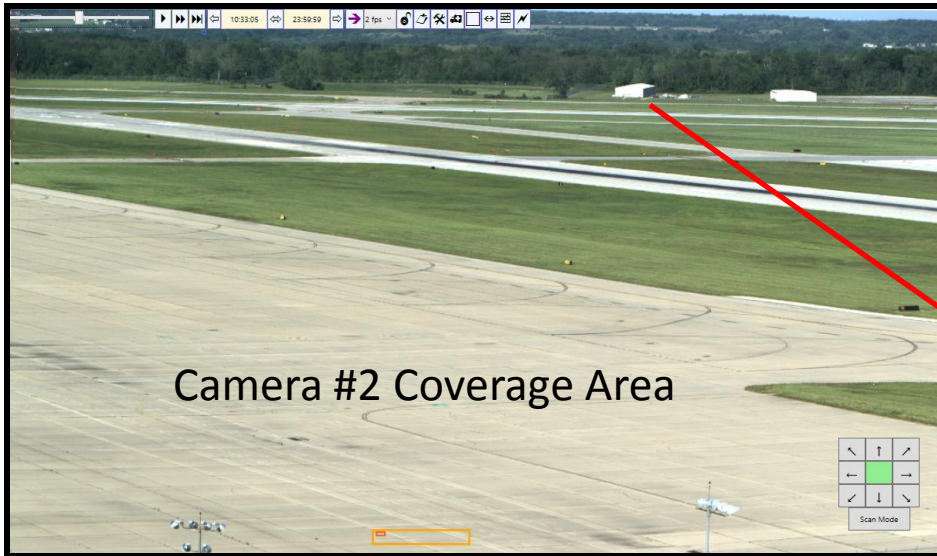


Slight Zoom View of Top of Image

Vision RL

Persistent Vision System

BASE SYSTEM IMAGE



Camera #2

- 50 mm Lens
- Images captured at 18:20 May 24, 2013



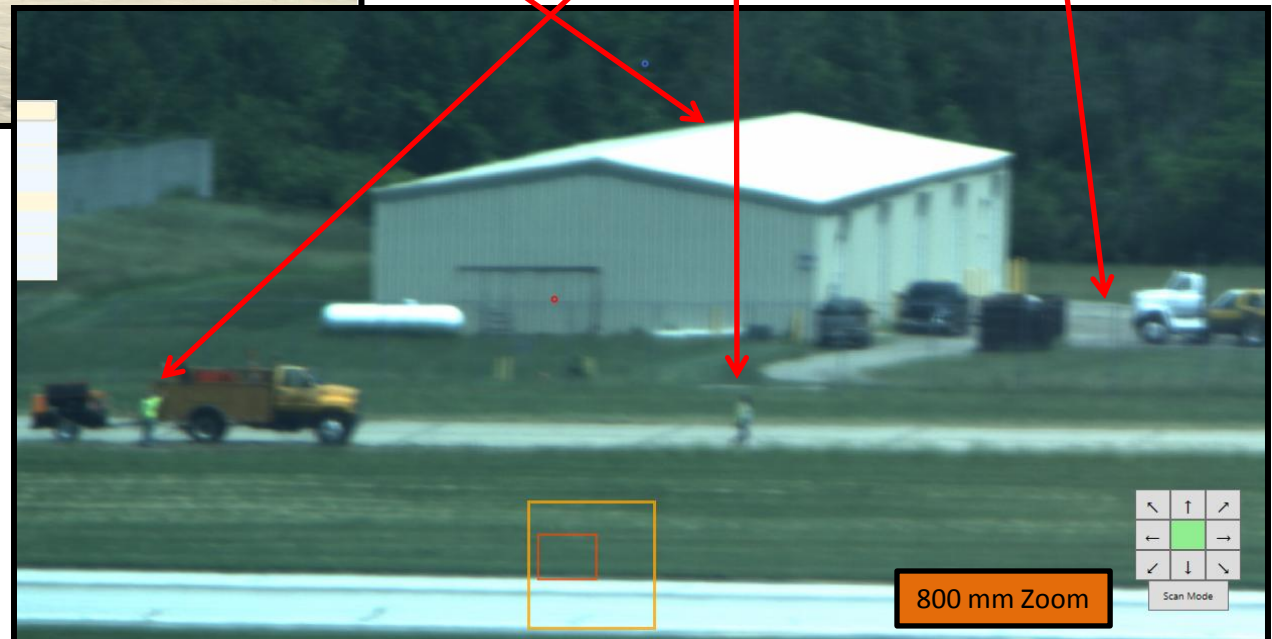
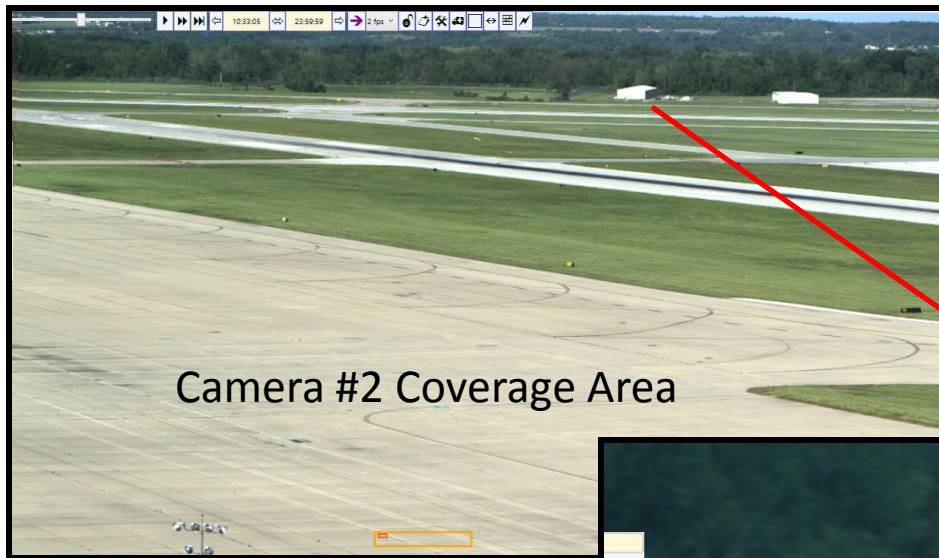
Vision RL

Persistent Vision System

SPOTTER CAMERA IMAGE

Spotter Camera

- 800 mm Lens
- Image taken at 13:52 May 29, 2013



Vision RL

Persistent Vision System

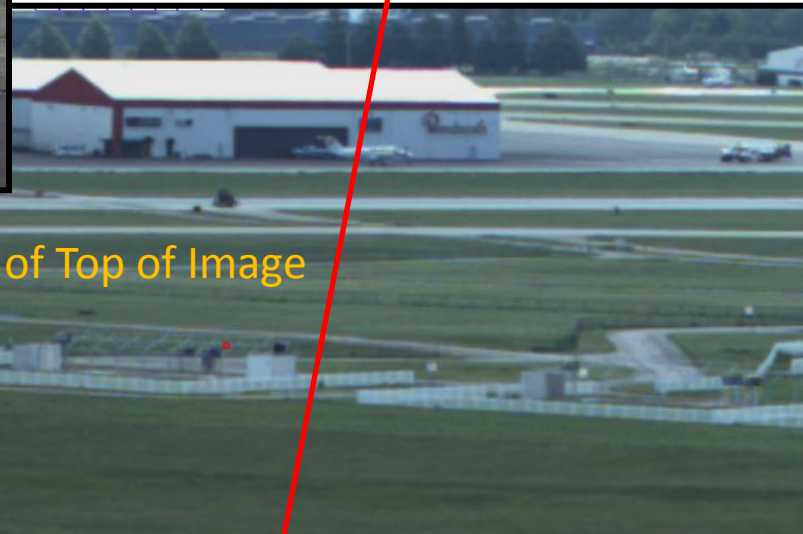
BASE SYSTEM IMAGE



Zoom of Top of Image

Camera #3

- 50 mm Lens



Slight Zoom View of Top of Image



Camera #3 Coverage Area



Additional Zoom of Top of Image



Vision RL

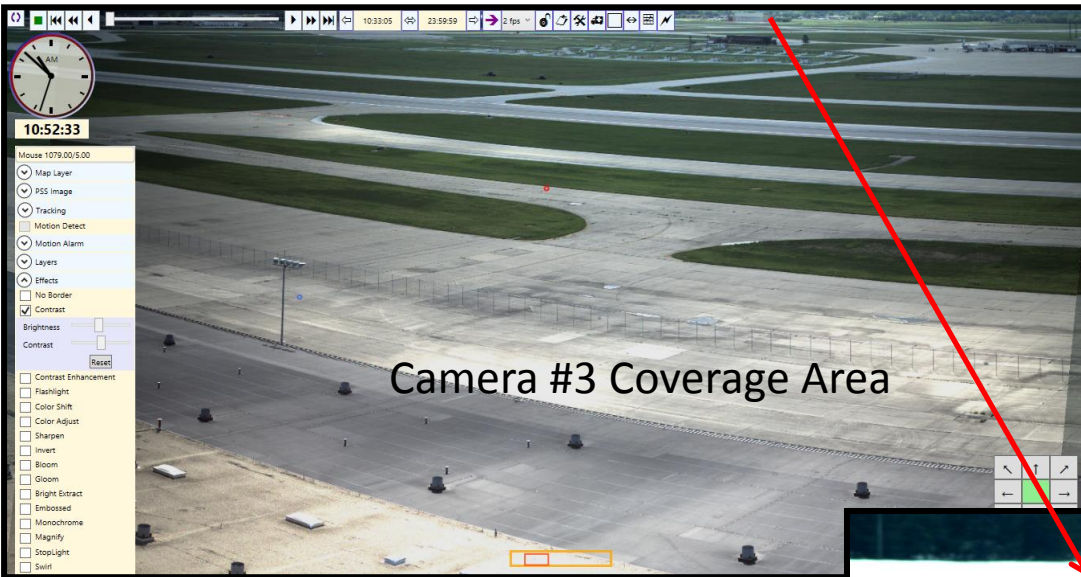
Persistent Vision System

SPOTTER CAMERA IMAGE



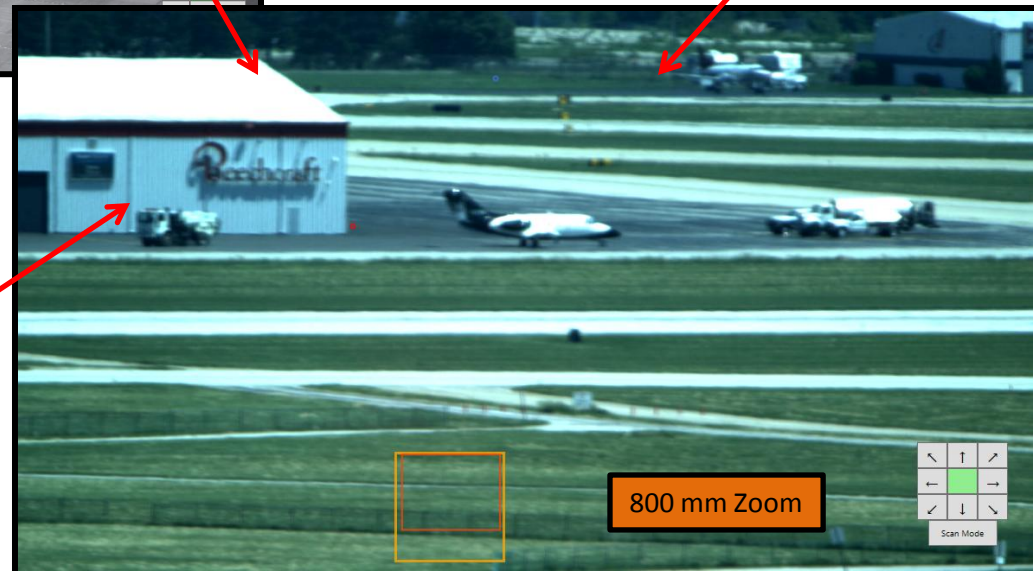
Spotter Camera

- 800 mm Lens
- Image taken at 13:52 May 29, 2013



Camera #3 Coverage Area

Perimeter Fence



800 mm Zoom

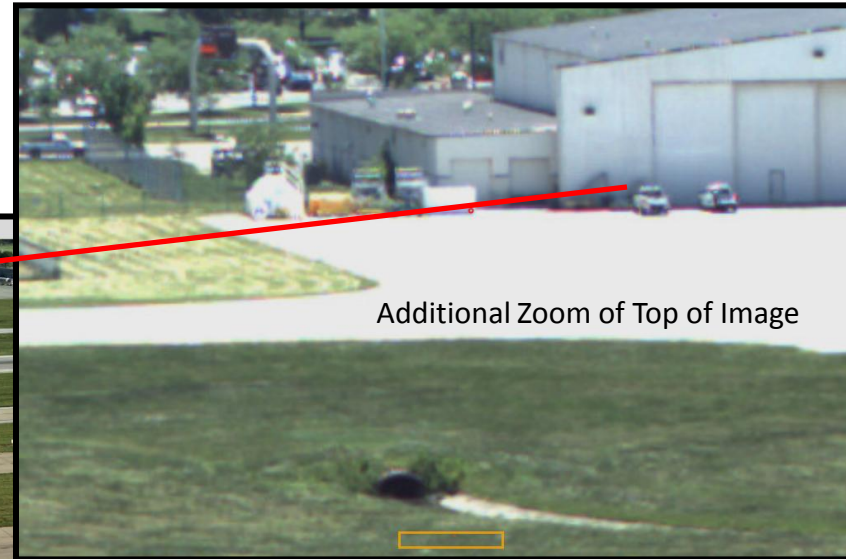
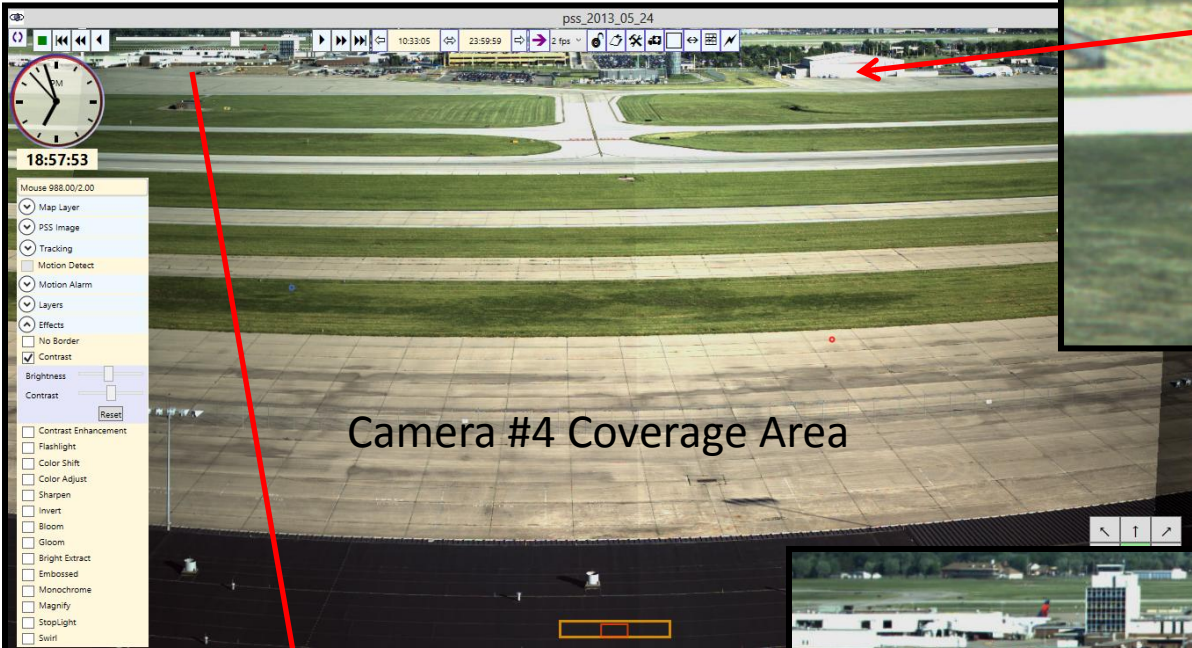
50 mm Digital Zoom

Additional Zoom of Top of Image

Vision RL

Persistent Vision System

BASE SYSTEM IMAGE



Camera #4

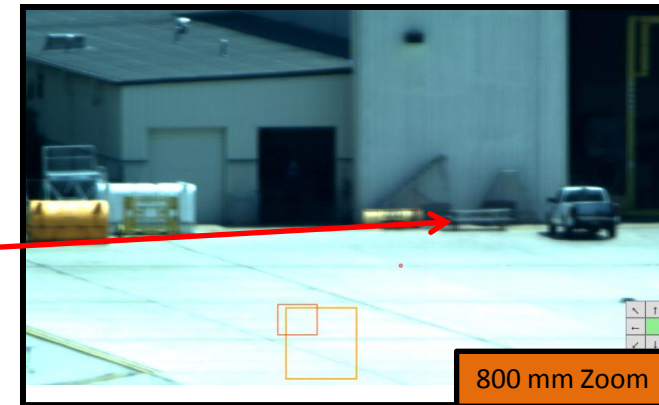
- 50 mm Lens
- Images captured 18:57 May 24, 2013



Vision RL

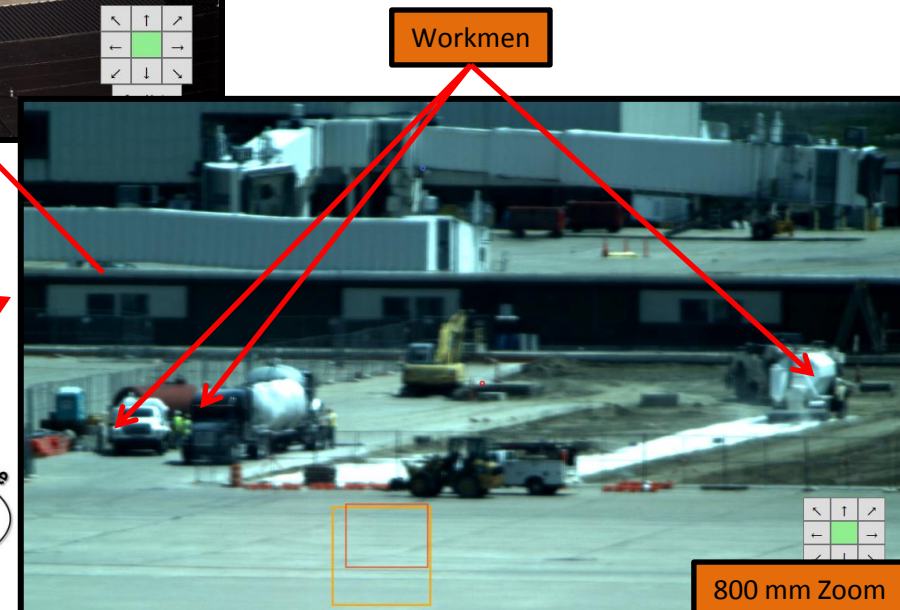
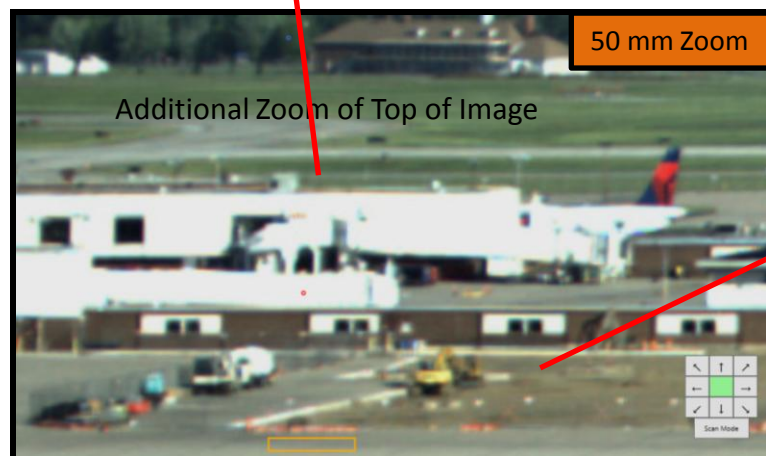
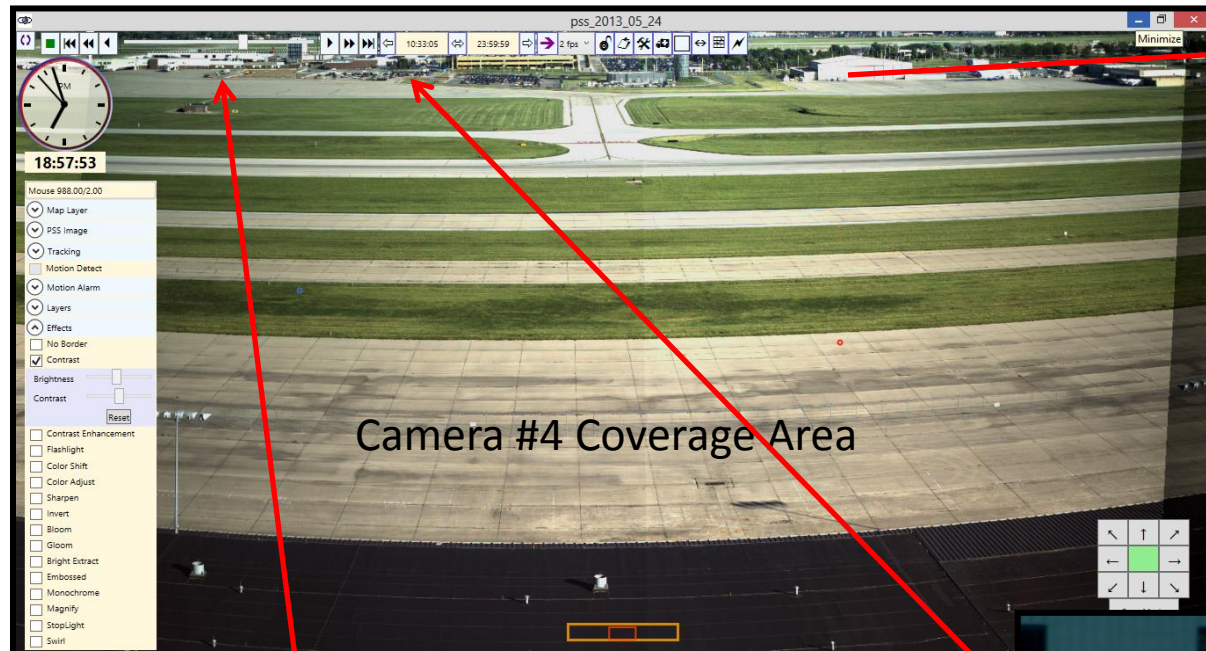
Persistent Vision System

SPOTTER CAMERA IMAGE



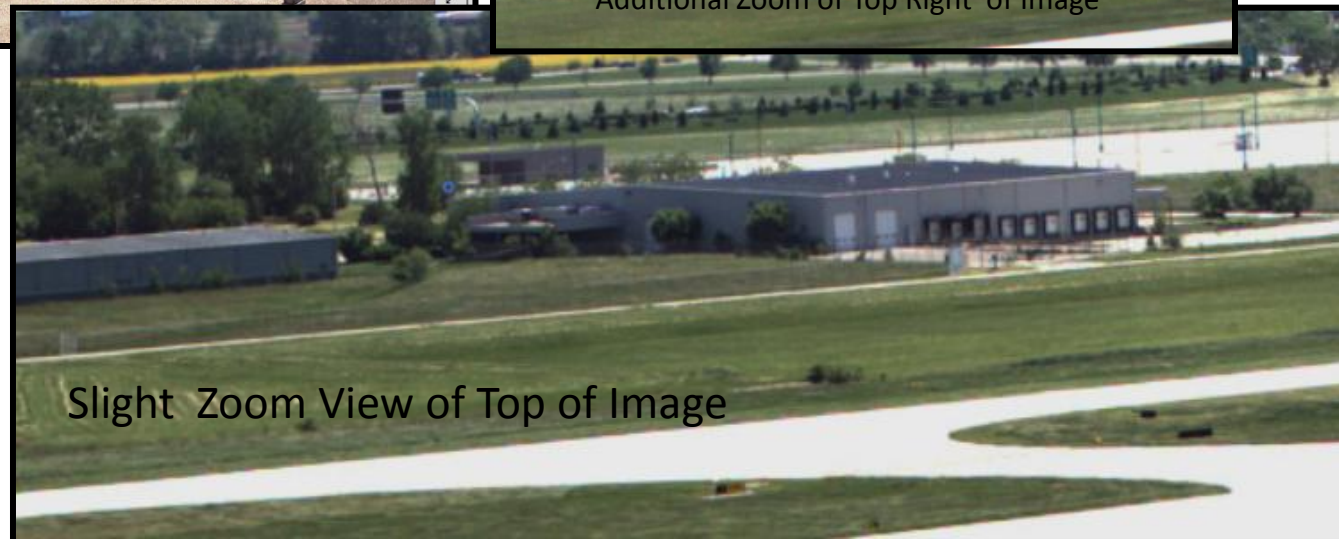
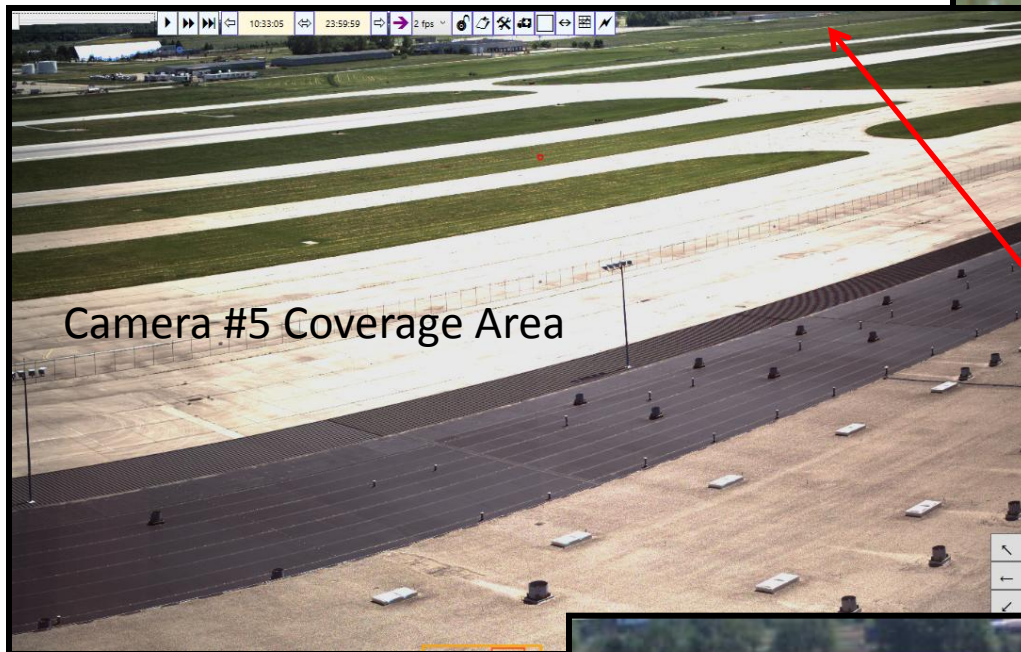
Spotter Camera

- 800 mm Lens
- Images taken at 13:52 May 29, 2013



Vision RL

Persistent Vision System

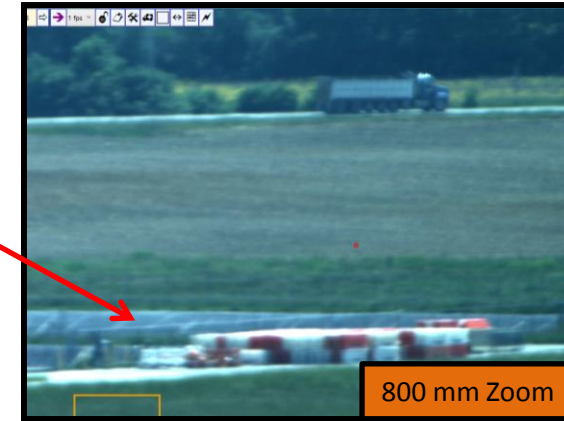
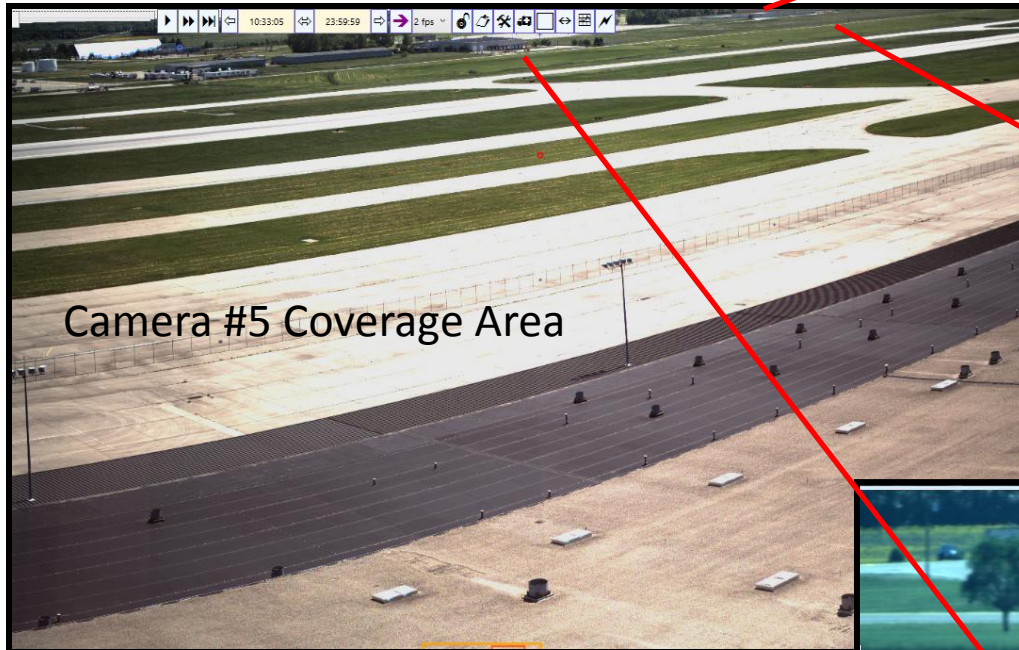


Camera #5

- 50 mm Lens
- Images captured 14:57 May 24, 2013

Vision RL

Persistent Vision System



SPOTTER CAMERA IMAGE

Spotter Camera

- 800 mm Lens
- Images taken at 13:52 May 29, 2013



Vision RL

Persistent Vision System

BASE SYSTEM IMAGE



Camera #6 Coverage Area

Camera #6

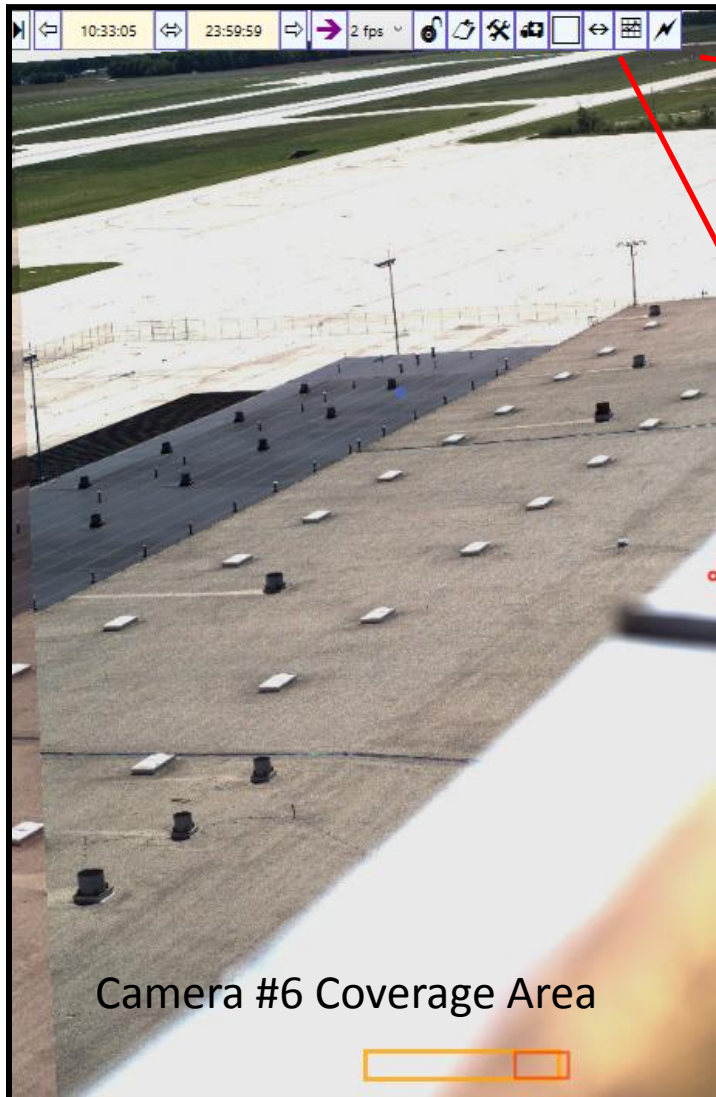
- 50 mm Lens
- Images captured 14:57 May 24, 2013



Vision RL

Persistent Vision System

SPOTTER CAMERA IMAGE



Camera #6 Coverage Area



800 mm Zoom

Spotter Camera

- 800 mm Lens
- View impeded due Tower Rail around roof and building surveillance camera.
- Images taken at 13:52 May 29, 2013



Additional Zoom of Top Right of Image

50 mm Zoom

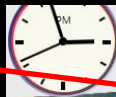
Vision RL

BASE SYSTEM IMAGE



Persistent Vision System

Camera #7
Coverage
Area



14:57:41

Mouse 952.00/30.00

☒ Map Layer

☒ PSS Image

☒ Tracking

☐ Motion Detect

☐ Motion Alarm

☒ Layers

☒ Effects

☐ No Border

☒ Contrast

Brightness

Contrast

☐ Contrast Enhancement

☐ Flashlight

☐ Color Shift

☐ Color Adjust

☐ Sharpen

Camera #7

- 50 mm Lens
- Images captured 14:57 May 24, 2013

Slight Zoom View of Top of Image



Vision RL

SPOTTER CAMERA IMAGE



Persistent Vision System

Perimeter Fence

Camera #7
Coverage
Area



Spotter Camera

- 800 mm Lens
- View impeded due to Tower Rail around roof and building surveillance camera.
- Images taken at 13:52 May 29, 2013

Vision RL

Persistent Vision System

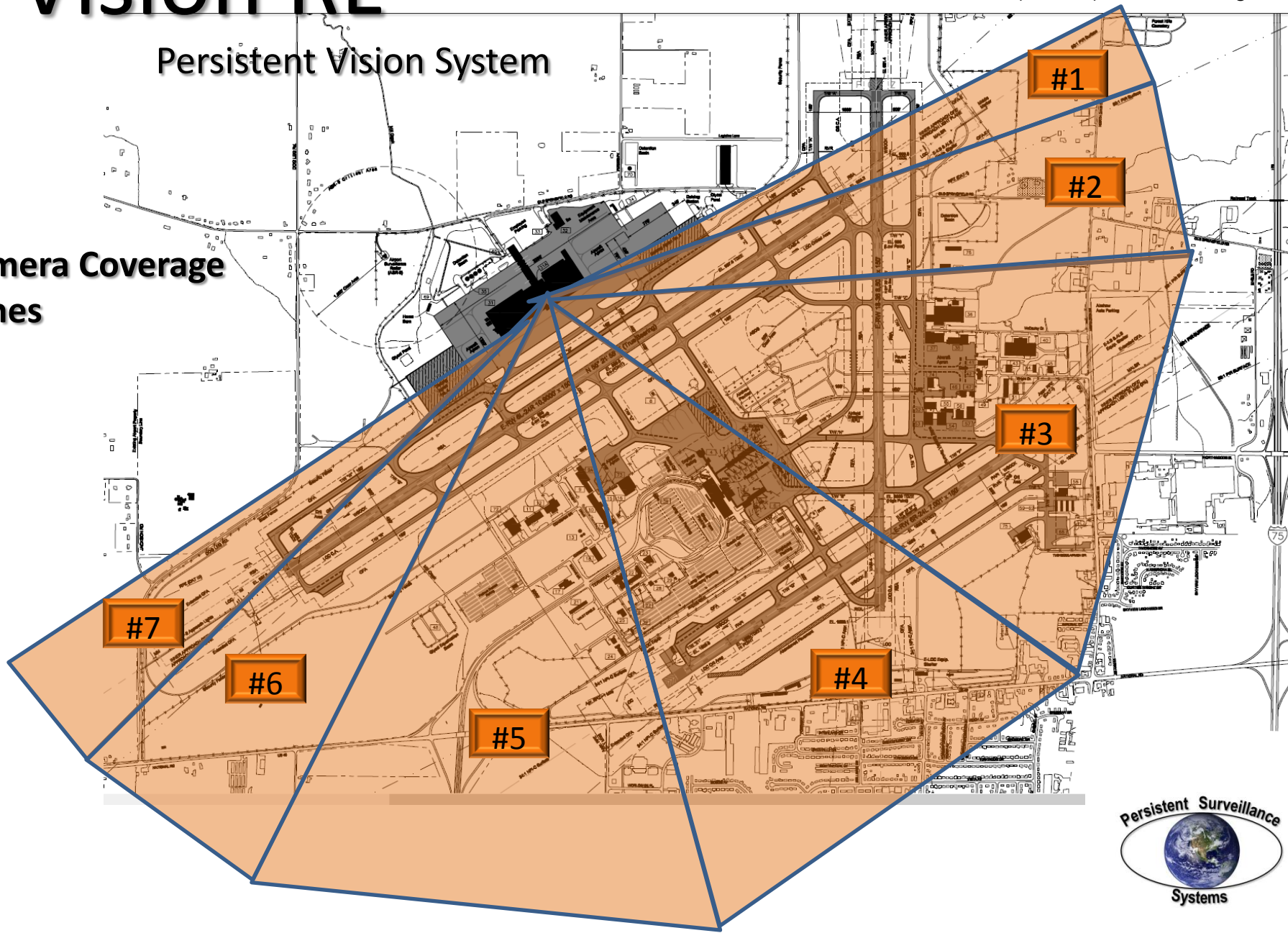
Base System Configuration – EO (Daylight)

2.5 mile (4 km) radius

9.8 sq mile (25 km) coverage area

1.5 foot (.5 meter) resolution throughout

Camera Coverage Zones



A large, white, boxy surveillance camera is mounted on a black tripod. The camera has a rectangular sensor housing on top and a larger, hexagonal base with multiple viewing ports. It is positioned on a tarmac at sunset, with a fighter jet visible in the background. The sky is a mix of orange, yellow, and blue.

VISION-RL

Persistent Vision System

- Airport Security
- Infrastructure Monitoring
- Port Security
- Special Event Coverage
- Border Surveillance
- Theme Park Surveillance